

PHILLIS WHEATLEY SCHOOL

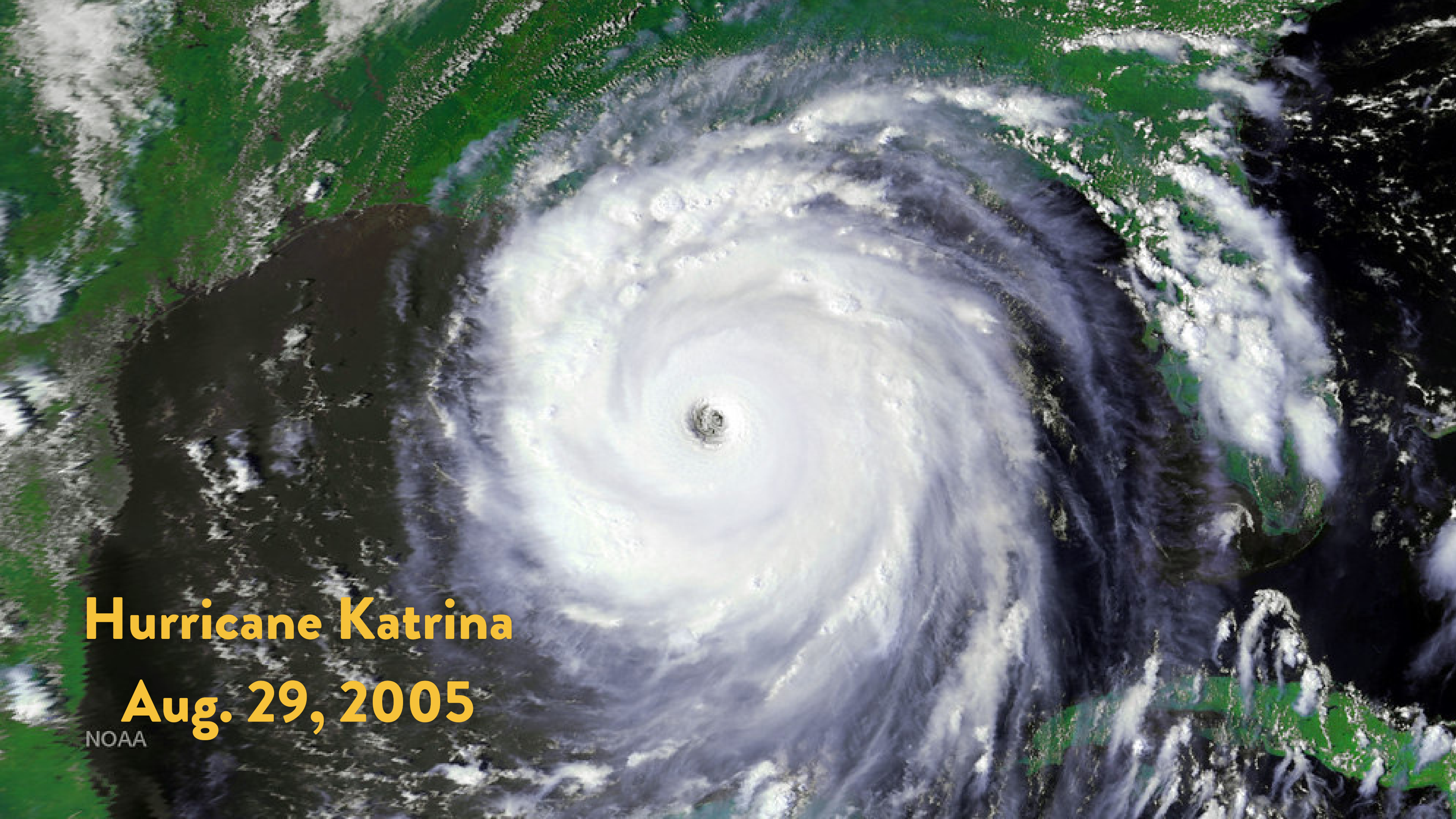
NOLA PUBLIC
SCHOOLS

The School Facilities Master Plan – Media Kit



Table of Contents

- Hurricane Katrina - 3, 4
- School Facilities Master Plan (SFMP) - 5, 6
- Timeline - 7
- Leaders - 8, 9
- Stats & Funding - 10, 11
- Map - 12, 13
- Before/After Pictures - 14, 15
- New Construction Pictures - 16
- Student Pictures - 17
- EVENT INVITATION - 18
- PRESS RELEASE - 19
- NOLA Public Schools Info - 20
- Media Contacts - 21



Hurricane Katrina

Aug. 29, 2005

NOAA

**Hurricane Katrina
left 80% of New
Orleans
underwater,
destroying or
severely damaging
110 of the city's 126
public school
buildings.**

To download Katrina
pictures, click [here](#).



SCHOOL FACILITIES MASTER PLAN

The \$2+ billion New Orleans School Facilities Master Plan (SFMP) is the Largest school recovery program in the history of the United States. **15 years later, its completion is being celebrated!**

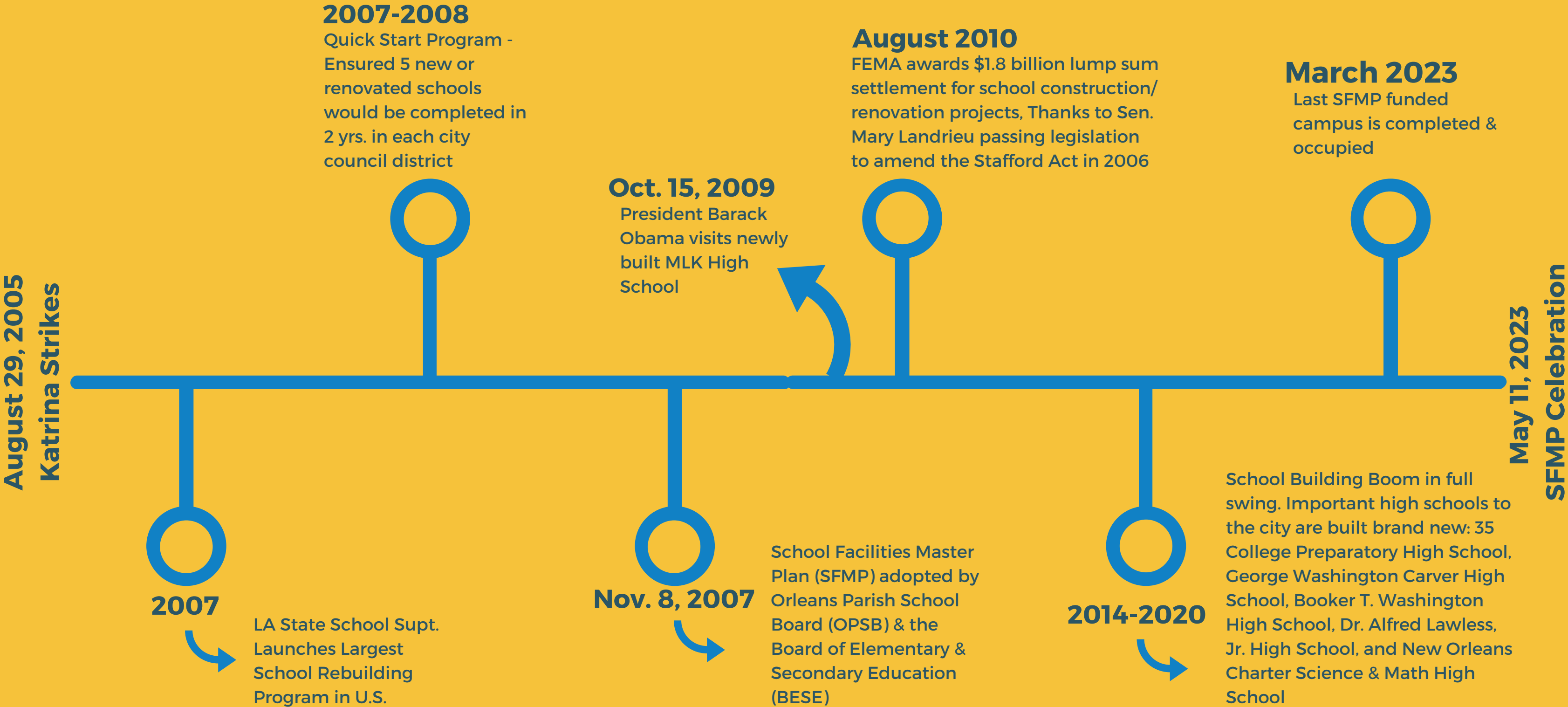




Partnership between



TIMELINE - School Facilities Master Plan (SFMP)



SCHOOL FACILITIES MASTER PLAN LEADERS



Mary Landrieu
United States Senator

Instrumental in amending the Stafford Act which dictated how FEMA doled out funds after a disaster & helped secure the \$1.8 billion lump sum settlement from FEMA to fund the School Facilities Master Plan.



Paul Pastorek
Former State Supt.

Louisiana State School Superintendent, Post Hurricane Katrina (2007-2011), who launched the School Facilities Master Plan - the largest school rebuilding program in the United States to help bring back New Orleans public schools.



Bill Rouselle
CEO Bright Moments

President & CEO of Bright Moments LLC who helped implement the Quick Start program, immediately after the storm, to ensure a new or renovated school would be completed in 2 years within each of the city's 5 council districts.

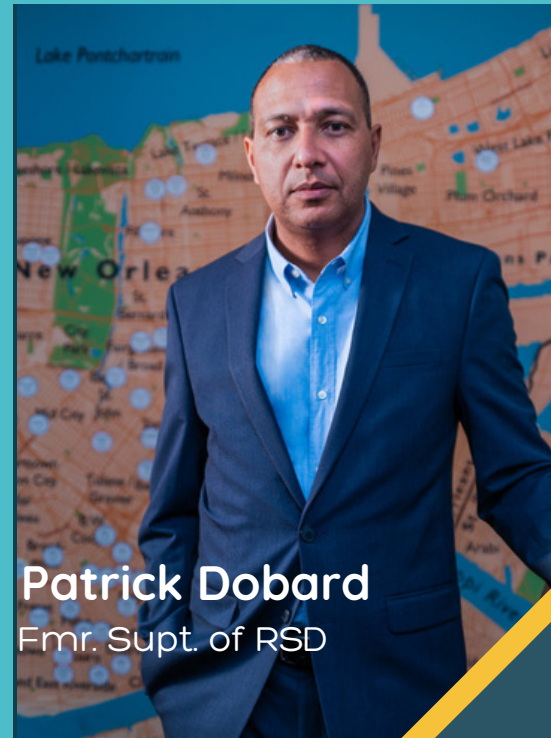


Darryl Kilbert
Former OPSB Supt.

Orleans Parish School Board Superintendent from 2006-2012 who helped implement the School Facilities Master Plan and oversaw the construction of more than a dozen schools.

**Interviews
available
upon
request.**

SCHOOL FACILITIES MASTER PLAN LEADERS



Patrick Dobard
Fmr. Supt. of RSD

Former Superintendent of the Recovery School District (RSD), from 2012-2017, instrumental in implementing the Disadvantaged Business Enterprise (DBE) Program to ensure 25% of the school rebuilding effort went to local businesses owned by minorities and women.



Lona Edwards Hankins
Fmr. Dir. of Major Capital Improvements for RSD

From 2007-2018, Mrs. Hankins oversaw the largest school building boom during the implementation of the School Facilities Master Plan, roughly 45 schools, including some of the city's major high schools, such as 35 College Preparatory and George Washington Carver.



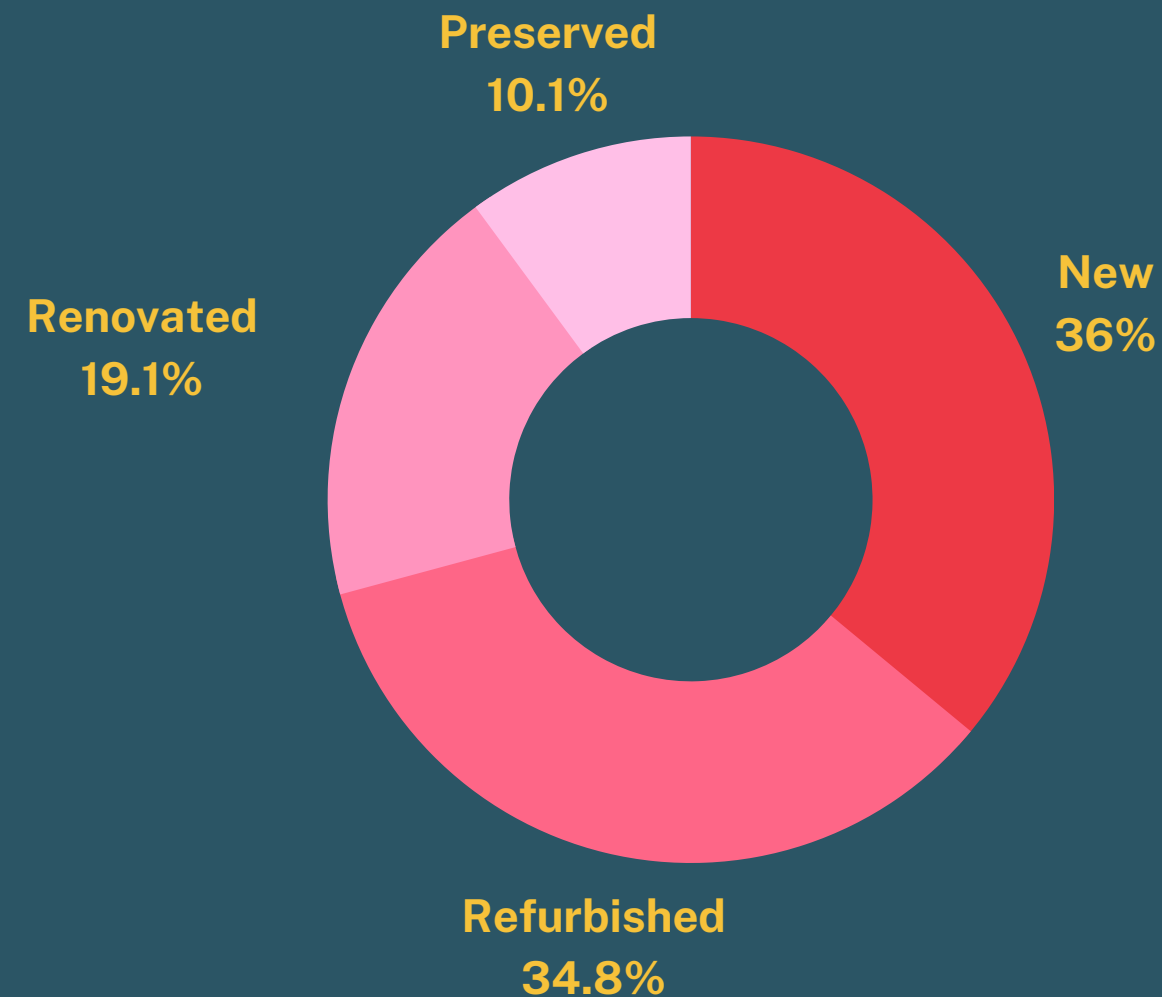
Dr. Avis Williams
Supt. of NOLA Public Schools

Current Superintendent of NOLA Public Schools during the completion of the School Facilities Master Plan. She is responsible for ensuring there's a plan to maintain the upkeep of the new, renovated, refurbished, and preserved school buildings under the SFMP.

**Interviews
available
upon
request.**

89 Total School Facilities

Built, Renovated, Refurbished, or Preserved by SFMP



32 NEW SCHOOLS BUILT

31 REFURBISHED SCHOOLS

17 RENOVATED SCHOOLS

9 PRESERVED SCHOOLS

3+ Million

Square footage of educational
space created

Cost of School Facilities Master Plan



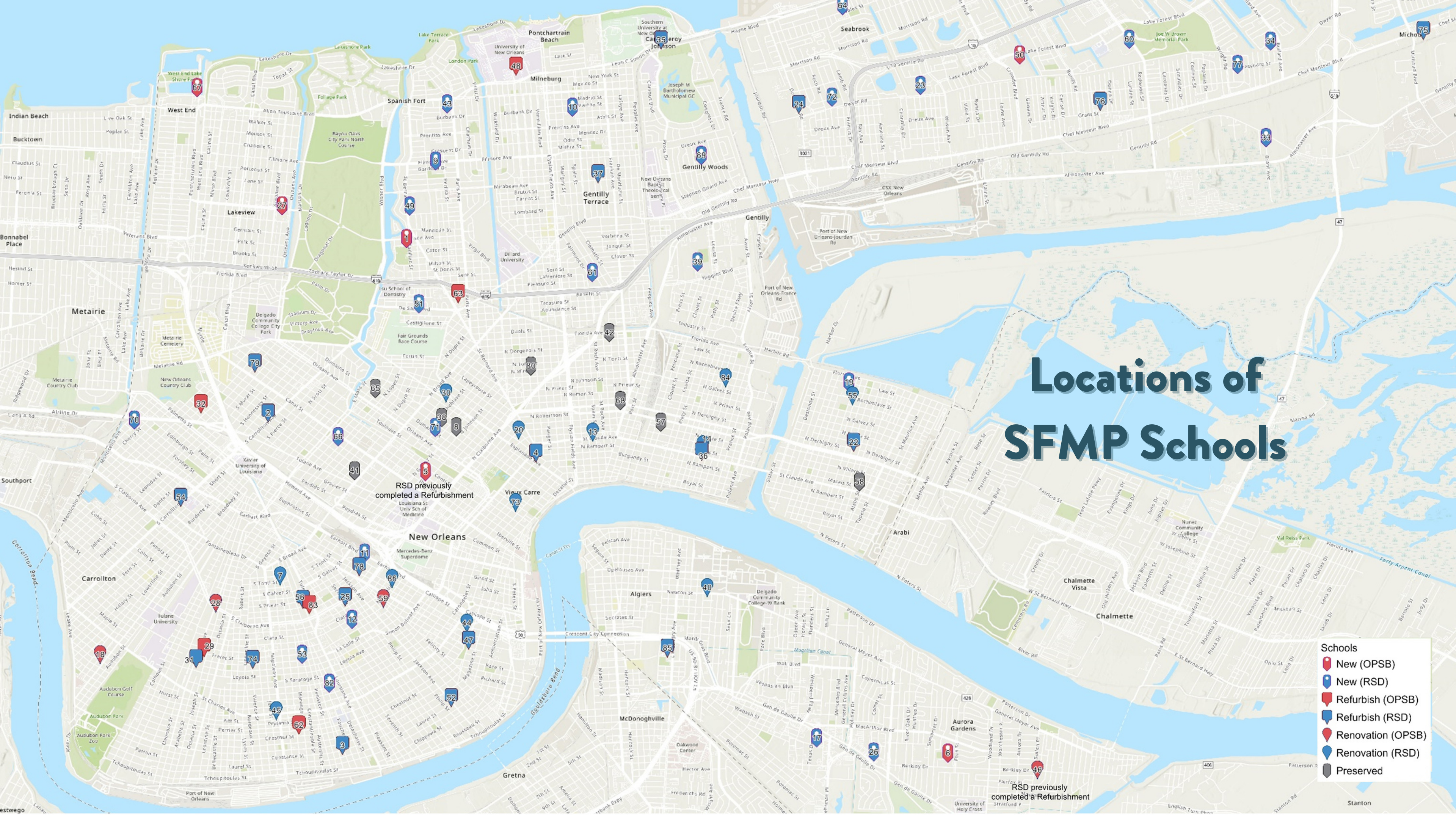
\$1.8 Billion	FEMA Settlement (lump sum)
\$130+ Million	Community Development Block (CDBG) Grants
\$100+ Million	Tax Credits
\$2.1+ Billion	Total Funding

250+ local minority & women-owned businesses were awarded \$300+ million in subcontracts, thanks to the SFMP's Disadvantaged Business Enterprise (DBE) program.

Locations of SFMP Schools

Schools

- New (OPSB)
- New (RSD)
- Refurbish (OPSB)
- Refurbish (RSD)
- Renovation (OPSB)
- Renovation (RSD)
- Preserved



ID	Current Building Name	Address	Square Footage (Final)	Capacity
1	35 College Preparatory	4000 Cadillac Street	228,052	1312
2	A. D. Crossman ★	4407 Carrollton	36,037	382
3	Agnes L. Bauduit ★	3649 Laurel	35,715	342
4	Albert W. Dent ★	2733 Esplanade Ave, 70119	57,000	506
5	Albert Wicker	2011 Bienville	129,000	N/A
6	Alice M. Harte	5300 Berkley	103,842	850
7	Andrew H. Wilson School	3617 General Pershing	96,112	850
8	Andrew J. Bell	1010 N. Galvez St	114,263	N/A
9	Arthur Ashe	1456 Gardena Drive, 70122	95,757	556
10	Avery Alexander	5800 St. Roch	110,000	867
11	Booker T. Washington	1201 S. Roman	237,682	1000
12	Carter G. Woodson	2514 Third	102,673	556
13	Charles J. Colton	2300 St. Claude	143,442	850
14	Charles R. Drew	3819 St. Claude	68,512	654
15	Dolores T. Aaron ★	10200 Curran	97,127	556
16	Dominic Mai Thanh Luong	5100 Cannes St, 70129	62,478	590
17	Dorothy I. Height	3501 Seine Street, 70114	107,000	850
18	Dorothy Mae Taylor	428 Broadway Street	66,680	378
19	Dr. Alfred Lawless, Jr. ★	5300 Law Street	139,000	800
20	Dr. Alice R. Geoffray	1331 Kerlerec Street	143,044	950
21	Dr. Everett J. Williams, Jr.	7315 Willow	75,020	430
22	Dr. Martin Luther King	1617 Fats Domino Ave	85,677	610
23	Dr. Milton J. Becnel	7301 Dwyer Rd, 70126	106,838	800
24	Dwight D. Eisenhower	3700 Tall Pines	53,071	474
25	Edgar P. Harney	2503 Willow	58,445	366
26	Edna Karr	4400 General Meyer	153,548	1000
27	Edward Hynes	990 Harrison	107,000	850
28	Eleanor McMain	5712 S. Claiborne Ave	150,011	884
29	Elijah Brimmer, Jr. ★	5624 Feret	153,548	1,390
30	Elliot and Mary Jane Willard ★	2426 Esplanade Avenue	125,000	822
31	Ellis L. Marsalis, Jr. ★	5625 Loyola Ave, 70115	77,881	598
32	Enrique Alférez ★	4040 Eagle	40,072	254
33	Ernest Dutch Morial	7701 Grant	125,000	1,000
34	Fannie C. Williams	11755 Dwyer	65,690	556
35	Frances Gaudet	12000 Hayne Blvd	62,613	562
36	Frederick A. Douglass	3820 St. Claude	128,316	820
37	Gentilly Terrace ★	4720 Painters	47,253	414
38	George Mondy ★	2327 St. Philip Street 70119	20,345	N/A
39	George Washington	3059 Higgins Blvd	230,168	1500
40	Harriet R. Tubman	2013 Gen. Meyer	61,923	582
41	Israel Augustine ★	425 S. Broad Street 70119	83,773	N/A
42	John A. Shaw	2518 Arts Street 70117	38,616	N/A
43	John F. Kennedy	6026 Paris Ave, 70122	173,008	872

SFMP SCHOOLS

Most up-to-date version of the map coming soon, please email talfonzo@nolapublicschools.com to get a link to the final version once it's completed.

44	Joseph A. Craig	1423 St. Phillip	59,607	542
45	Judge James Skelly Wright	1426 Napoleon Avenue	114,206	925
46	Julius Rosenwald ★	6501 Berkley	73,349	N/A
47	Justice Revius Oliver Ortique, Jr.	1400 Camp St, 70130	50,197	478
48	Katherine Johnson	2001 Leon C. Simon	123,273	926
49	L.B. Landry ★	1200 Landry Blvd	214,032	1202
50	Lake Forest	11110 Lake Forest	108,300	850
51	Langston Hughes	3519 Trafalgar	98,642	556
52	Laurel	820 Jackson	103,792	890
53	Lawrence D. Crocker	2301 Marengo St, 70115	96,477	556
54	Leah L. Chase ★	2727 S. Carrollton Ave, 70118	69,455	694
55	Leah Metoyer McKenna	1641 N. Tonti, 70119	73,672	538
56	Live Oak ★	3128 Constance	84,771	630
57	Lorraine Hansberry ★	1339 Clouet Street 70117	59,520	N/A
58	Louis Armstrong ★	5909 Saint Claude Avenue	39,991	N/A
59	Mahalia Jackson	2405 Jackson Ave	50,043	300
60	Marion Abramson	5552 Read Blvd	106,838	800
61	Mary McLeod Bethune	2401 Humanity	106,444	850
62	McDonough #7	1111 Milan St.	125,000	362
63	Medard Nelson	3121 St. Bernard	59,363	542
64	Mildred C. Osborne	6701 Curran	97,031	556
65	Morris F.X. Jeff	800 N. Rendon Street 70119	29,654	N/A
66	Morris F.X. Jeff, Sr	211 S. Lopez St, 70119	110,434	850
67	North Kenilworth	8550 Curran Blvd	106,017	850
68	Oretha C. Haley	2515 N. Robertson Street 70117	48,486	N/A
69	Parkview	4617 Mirabeau	98,500	556
70	Paul L. Dunbar	9330 Forshey	92,895	556
71	Phillis Wheatley	2300 Dumaine	95,881	556
72	Ray Abrams	6519 Virgilian St	125,000	1000
73	Rose Mary Loving	715 Opelousas St, 70114	140,000	970
74	Samuel J. Green	2319 Valence	53,532	426
75	Sarah T. Reed ★	5316 Michoud	160,917	1,170
76	Schaumburg Elementary School	9501 Grant St	59,157	712
77	Sherwood Forest	4801 Maid Marion	106,444	850
78	Sylvanie Williams	3127 M. L. King	75,722	538
79	Thurgood Marshall	4621 Canal	63,026	474
80	Valena C. Jones	1901 N. Galvez Street 70119	60,453	N/A
81	Vorice Jackson Waters ★	1116 Jefferson	62,124	414
82	Walter L. Cohen	3575 Baronne Street	151,100	800
83	Warren Easton★	3019 Canal	128,525	950
84	William Frantz	3811 N. Galvez	94,584	550
85	William J. Fischer ★	1801 LB Landry	90,489	606
86	William J. Guste	2625 Thalia	70,067	570

★ Historic



Phillis Wheatley Elementary - Before



Phillis Wheatley Elementary - After



Eleanor McMain H.S. - Before

To download before/after pics,
click [here](#).



Eleanor McMain H.S. - After

New Construction



Edna Karr High School

To download new/renovated pics,
click [here](#).

Fannie C. Williams Elementary



To
download
pictures of
students,
click [here](#).

NOLA-PS & RSD are hosting
a ceremony to celebrate the
completion of the
School Facility Master Plan
and its impressive \$1.8 billion
FEMA funded projects and
beyond.

NOLA PUBLIC SCHOOLS
EVERY CHILD. EVERY SCHOOL. EVERY DAY.

&

RECOVERY
School District
Excellence.Equity.Community.

INVITE YOU TO

Celebrate

A JOB WELL DONE

**REBUILDING
NEW ORLEANS
PUBLIC SCHOOLS**

**THURSDAY, MAY 11, 2023
5:30-7:30 PM**

**DR. ALICE GEOFFRAY SCHOOL
1331 KERLEREC STREET
NEW ORLEANS, LA**

School Facilities Master Plan

Press Release - click [here.](#)



NOLA PUBLIC SCHOOLS

QUICK FACTS



OUR VISION: Every student receives a high-quality education that fosters their individual capabilities, while ensuring that they thrive and are prepared for civic, social, and economic success.



43,000+ - Total Number of Students
2,626 - Graduates in 2021



72 Schools - Elementary, Middle, & High Schools



NOLA Public Schools (NOLA-PS) is governed by the Orleans Parish School Board & is the only all-charter public school system in the nation.

NOLA Public Schools Media Contact:

Taslin Alfonso, APR

NOLA-PS Director of Media Relations

communications@nolapublicschools.com

Work Cell: 504.202.7229



Recovery School District Media Contact:

Annie Clark

RSD Chief Operations Officer

annie.clark@la.gov

Work Cell: 504.920.6881

